

► **Test Items:**

| Category | Test Item | Specimen Type | Sample Volume | Reaction Time | Measuring Range |
|------------------|----------------------|---------------|---------------|---------------|-----------------|
| Diabetes | HbA1c | WB | 5uL | 15min | 3.0-14.0% |
| Inflammation | CRP | S/P/WB | 5uL | 3min | 0.5-200mg/L |
| | PCT | S/P/WB | 25uL | 10min | 0.05-100ng/mL |
| | SAA | S/P/WB | 10uL | 15min | 2.0-300ug/mL |
| Cardiac | CK-MB | S/P/WB | 100uL | 10min | 2.0-80ng/mL |
| | cTnI | S/P/WB | 100uL | 10min | 0.05-40ng/mL |
| | Myo | S/P/WB | 100uL | 10min | 20-600ng/mL |
| | NT-proBNP | S/P/WB | 100uL | 15min | 50-25000pg/mL |
| | D-Dimer | P/WB | 100uL | 10min | 0.1-10mg/L |
| | H-FABP | S/P/WB | 100uL | 15min | 1-120ng/mL |
| Hormone | T3 | S/P/WB | 100uL | 10min | 0.5-10nmol/L |
| | T4 | S/P/WB | 100uL | 10min | 10-350nmol/L |
| | TSH | S/P/WB | 100uL | 10min | 0.1-60uIU/mL |
| | 25-OH-D ₃ | S/P | 100uL | 15min | 5-80ng/mL |
| | β-HCG | S/P/WB | 25uL | 15min | 5-50000mIU/mL |
| | LH | S/P/WB | 100uL | 15min | 5-200mIU/mL |
| | FSH | S/P/WB | 100uL | 10min | 1-150mIU/mL |
| | GH | S/P/WB | 100uL | 10min | 0.05-100ng/mL |
| | PRL | S/P/WB | 100uL | 10min | 1-100ng/mL |
| | AMH | S/P/WB | 100uL | 10min | 0.1-50ng/mL |
| Gastric Function | PGI | S/P/WB | 100uL | 10min | 10-60ng/mL |
| | PGII | S/P/WB | 100uL | 10min | 5-100ng/mL |
| | G-17 | S/P/WB | 100uL | 10min | 5-300ng/mL |
| Renal Function | NGAL | S/P/WB/Urine | 100uL | 10min | 50-5000ng/mL |
| | mALB | Urine | 100uL | 5min | 10-200mg/L |
| | β2-MG | S/P/WB | 10uL | 10min | 0.5-20mg/L |
| | CysC | S/P/WB | 10uL | 5min | 0.5-10ng/L |
| Others | PSA | S/P/WB | 100uL | 10min | 2-50ng/mL |
| | COVID-19 | S/P/WB | 5uL | 15min | |

— New items are ongoing

LS-1100

Dry Fluorescence Immunoassay Analyzer (Portable)

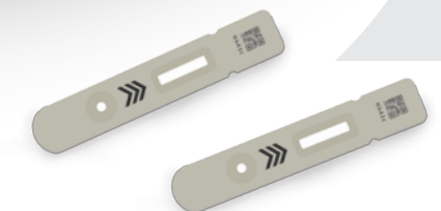


Quantitative

Rapid

Sensitive

Reliable



Accurate, Anytime and Anywhere

LS-1100 Dry Fluorescence Immunoassay Analyzer (Portable)

► Analyzer Introduction:

LS-1100 uses the advanced method of Time-resolved Fluorescence Immunoassay (TRFIA), for the in-vitro quantitative detection of bio-markers for Diabetes Mellitus, Inflammation, Cardiovascular Diseases, Hormone, Gastric Diseases, Renal Diseases, Tumor, etc.

Application: Laboratory, ER, Cardiology, ICU, Respiratory, Pediatrics, etc.

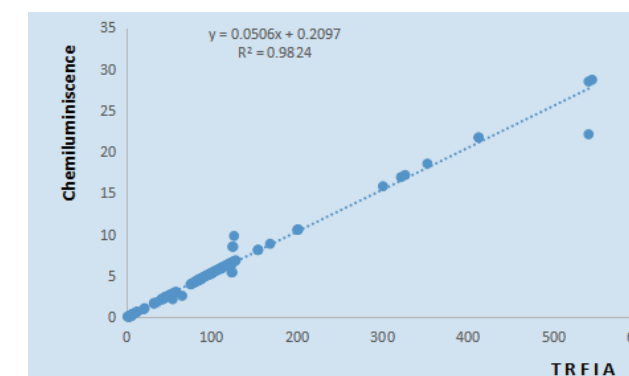
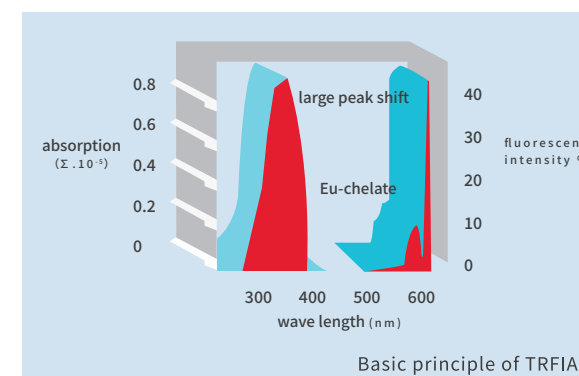
► Features:



“ **Quantitative, Rapid and High Sensitive
Reliable Result (QC system, QR code calibration)** ”

| | |
|--------------------|---|
| Method | Time-resolved Fluorescence Immunoassay (TRFIA) |
| Specimen | Serum/Plasma/Whole Blood/Urine |
| Weight | 1.3 kg |
| Dimensions | 225mm×152mm×105mm (L×W×H) |
| Screen | 7 inch touch screen |
| Data Storage | 10000 |
| Printer | Built-in thermal printer |
| Battery | Built-in lithium battery (standby time: 10 hrs) |
| Information System | RS232(LIS/HIS), USB, WIFI, Bluetooth |

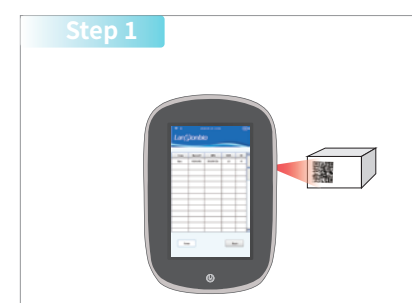
► Time-resolved Fluorescence Immunoassay (TRFIA) Method:



Good correlation with chemiluminescence method

TRFIA is super-sensitive detection technique characterized by specific fluorescence of rare earth ions. It is not only highly sensitive, but also overcomes the instability of enzyme marker and is the best choice for immunological detection. The high fluorescence intensity and long life of labeled ionic chelates are beneficial to eliminate the influence of fluorescent substances in samples and environment on the test results.

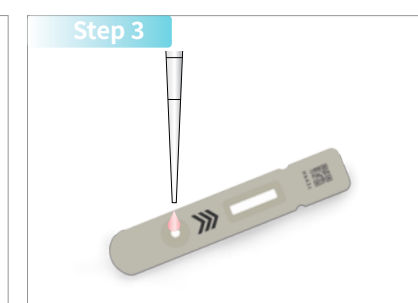
► Easy Operation:



QR Code Calibration



Information Input



Sample Dispense



Automatic detection



Result Output

► Test Items:

| Category | Test Item | Specimen Type | Sample Volume | Reaction Time | Measuring Range |
|------------------|----------------------|---------------|---------------|---------------|-----------------|
| Diabetes | HbA1c | WB | 5uL | 15min | 3.0-14.0% |
| Inflammation | CRP | S/P/WB | 5uL | 3min | 0.5-200mg/L |
| | PCT | S/P/WB | 25uL | 10min | 0.05-100ng/mL |
| | SAA | S/P/WB | 10uL | 15min | 2.0-300ug/mL |
| Cardiac | CK-MB | S/P/WB | 100uL | 10min | 2.0-80ng/mL |
| | cTnI | S/P/WB | 100uL | 10min | 0.05-40ng/mL |
| | Myo | S/P/WB | 100uL | 10min | 20-600ng/mL |
| | NT-proBNP | S/P/WB | 100uL | 15min | 50-25000pg/mL |
| | D-Dimer | P/WB | 100uL | 10min | 0.1-10mg/L |
| | H-FABP | S/P/WB | 100uL | 15min | 1-120ng/mL |
| Hormone | T3 | S/P/WB | 100uL | 10min | 0.5-10nmol/L |
| | T4 | S/P/WB | 100uL | 10min | 10-350nmol/L |
| | TSH | S/P/WB | 100uL | 10min | 0.1-60uIU/mL |
| | 25-OH-D ₃ | S/P | 100uL | 15min | 5-80ng/mL |
| | β-HCG | S/P/WB | 25uL | 15min | 5-50000mIU/mL |
| | LH | S/P/WB | 100uL | 15min | 5-200mIU/mL |
| | FSH | S/P/WB | 100uL | 10min | 1-150mIU/mL |
| | GH | S/P/WB | 100uL | 10min | 0.05-100ng/mL |
| | PRL | S/P/WB | 100uL | 10min | 1-100ng/mL |
| | AMH | S/P/WB | 100uL | 10min | 0.1-50ng/mL |
| Gastric Function | PGI | S/P/WB | 100uL | 10min | 10-60ng/mL |
| | PGII | S/P/WB | 100uL | 10min | 5-100ng/mL |
| | G-17 | S/P/WB | 100uL | 10min | 5-300ng/mL |
| Renal Function | NGAL | S/P/WB/Urine | 100uL | 10min | 50-5000ng/mL |
| | mALB | Urine | 100uL | 5min | 10-200mg/L |
| | β2-MG | S/P/WB | 10uL | 10min | 0.5-20mg/L |
| | CysC | S/P/WB | 10uL | 5min | 0.5-10ng/L |
| Others | PSA | S/P/WB | 100uL | 10min | 2-50ng/mL |
| | COVID-19 | S/P/WB | 5uL | 15min | |

— New items are ongoing

LS-2100

Dry Fluorescence Immunoassay Analyzer (High Throughput)



Fast, Accurate and High-performance



LS-2100 Dry Fluorescence Immunoassay Analyzer (High Throughput)

► Analyzer Introduction:

LS-2100 uses the advanced method of Time-resolved Fluorescence Immunoassay (TRFIA), for the in-vitro quantitative detection of bio-markers for Diabetes Mellitus, Inflammation, Cardiovascular Diseases, Hormone, Gastric Diseases, Renal Diseases, Tumor, etc. LS-2100 has 8 channels, it can detect at most 8 samples with different items simultaneously.

Application: Laboratory, ER, Cardiology, ICU, Respiratory, Pediatrics, etc.

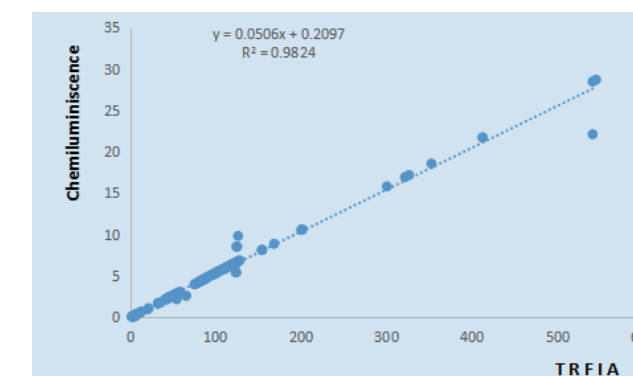
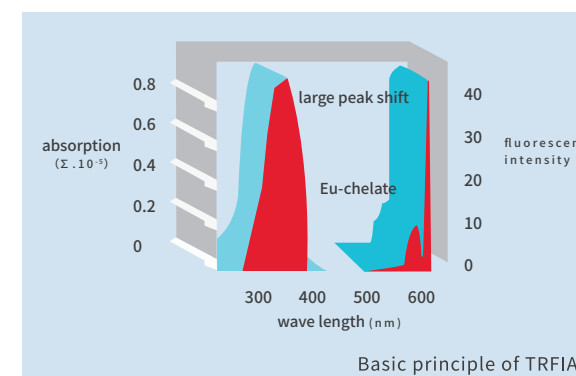
► Features:

- **High Throughput**
- **Rapid** (in 10 secs)
- **High Sensitive**
- **Reliable Results**
(QC system+QR Code Calibration
+Inner temperature control)



| | |
|--------------------|--|
| Method | Time-resolved Fluorescence Immunoassay (TRFIA) |
| Specimen | Serum/Plasma/Whole Blood/Urine |
| Weight | 7.5 kg |
| Dimensions | 390mm×290mm×205mm (L×W×H) |
| Screen | 10.1 inch HD touch screen |
| System | Android |
| Test Speed | 120 T/H |
| Data Storage | 10000 |
| Printer | Built-in thermal printer |
| Information System | RS232(LIS/HIS), RJ45, USB, WIFI, Bluetooth |

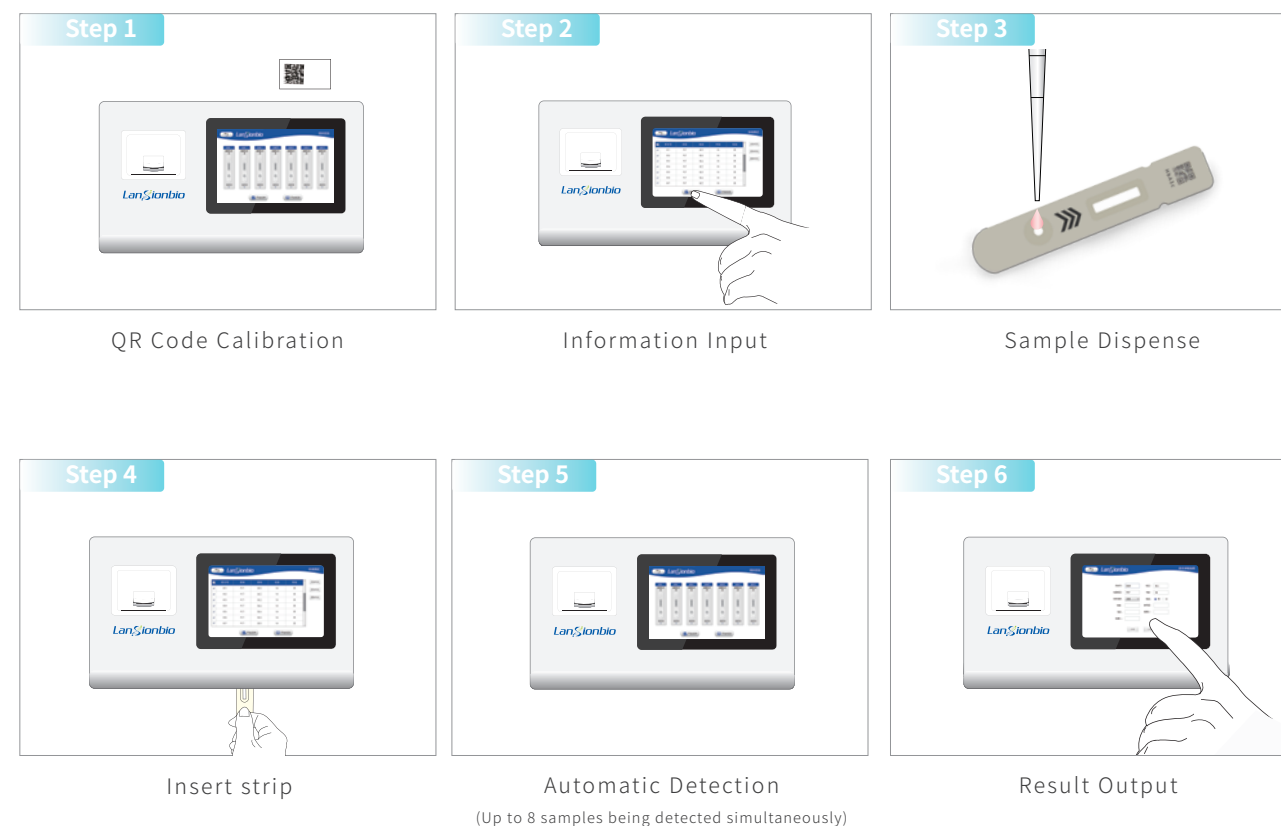
► Time-resolved Fluorescence Immunoassay (TRFIA) Method:



Good correlation with chemiluminescence method

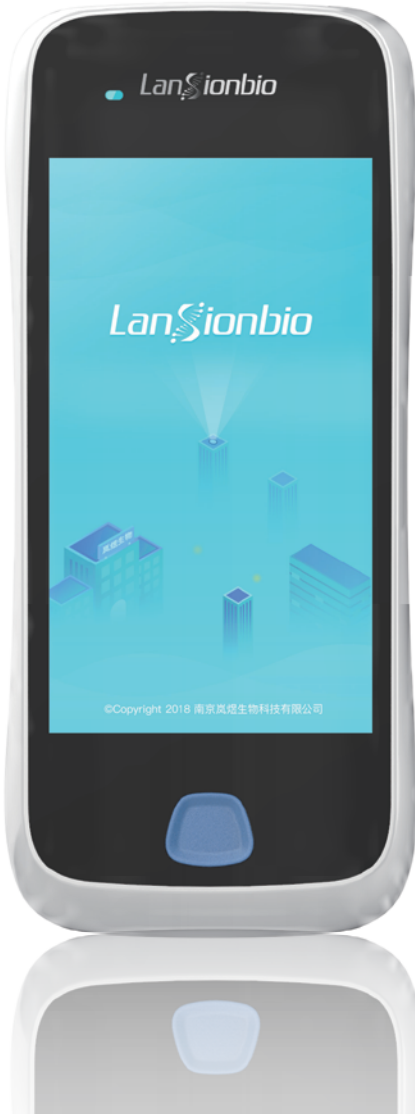
TRFIA is super-sensitive detection technique characterized by specific fluorescence of rare earth ions. It is not only highly sensitive, but also overcomes the instability of enzyme marker and is the best choice for immunological detection. The high fluorescence intensity and long life of labeled ionic chelates are beneficial to eliminate the influence of fluorescent substances in samples and environment on the test results.

► Easy Operation:

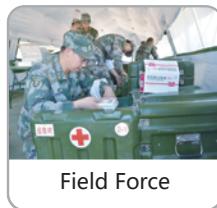


LS-4000

Dry Fluorescence Immunoassay Analyzer(Handheld)

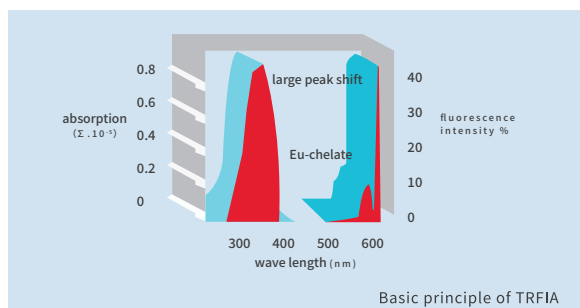


Application



Method

► Time-resolved Fluorescence Immunoassay (TRFIA)



LS-4000 uses the advanced method of Time-resolved Fluorescence Immunoassay (TRFIA), for the in-vitro quantitative detection of bio-markers for Diabetes Mellitus, Inflammation, Cardiovascular Diseases, Hormone, Gastric Diseases, Renal Diseases, Tumor, etc.

Quantitative

Reliable Result

High-sensitive

Specifications



| | |
|--------------------|---|
| Method | Time-resolved Fluorescence Immunoassay (TRFIA) |
| Specimen | Serum/Plasma/Whole Blood/Urine |
| Weight | 600 g |
| Dimensions | 191mm × 84.5mm × 45mm (L×W×H) |
| Screen | 5.0 inch touch screen |
| Data Storage | 50000 |
| Battery | Built-in lithium battery (standby time: 72 hrs) |
| Information System | RS232, Type-C USB, WIFI, Bluetooth and 4G |

Test Items

- **Diabetes:** HbA1c
- **Cardiac:** CK-MB, cTnI, Myo, NT-proBNP, D-Dimer, H-FABP
- **Inflammation:** CRP, PCT, SAA
- **Hormone:** TSH, T3, T4, 25-OH-D3, β-HCG, LH, FSH, GH, PRL, AMH
- **Renal Function:** NGAL, mALB, β2-MG, CysC
- **Gastric Function:** PGI, PGII, G-17
- **Others:** PSA, COVID-19



New items are ongoing

LA-100

Handheld Coagulation Analyzer (Electrochemistry)



Initiative



User-friendly

Reliable

Combo Test



LA-100 (Electrochemistry) Handheld Coagulation Analyzer

Specifications



| | |
|--------------------|---|
| Method | Electrochemistry |
| Specimen | Peripheral Blood |
| Weight | 300 g |
| Reaction Time | 1-5 min |
| Dimensions | 160.4mm × 80mm × 39 mm (L×W×H) |
| Screen | 4.0 inch touch screen |
| Data Storage | 300 |
| Battery | Built-in lithium battery (standby time: 72 hrs) |
| Charger | Charging base |
| Information System | RS232, WIFI and Bluetooth |

Test Items

- PT (Prothrombin Time)
- TT (Thrombin Time)
- APTT (Activated Partial Thromboplastin Time)
- ACT (Activated Clotting Time)
- FIB (Fibrinogen)

Coagulation tests are becoming common and routine in the clinical laboratory. They are mainly applied to the pre-operative examination, the pre-thrombosis examination and the monitoring of clinical oral anticoagulants patients. It's requested to test PT, TT, APTT and FIB before patient surgery.

LA-100 coagulation analyzer is one initiative device, which combines ACT, PT, TT, FIB, APTT in one strip (five-in-one).

